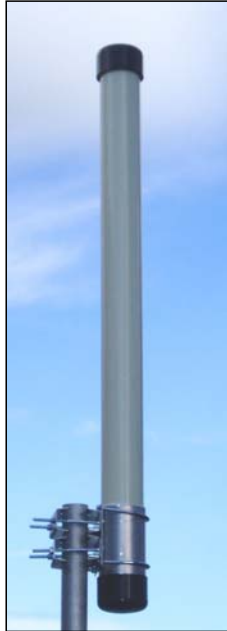




Stella Doradus Ireland Ltd.

26 3360-2.5 2.6GHz 13dBi Omni Antenna 2.5° downtilt



The 26 3360-2.5 is a vertically polarised high gain omni-directional antenna with 2.5 degree downtilt designed for use in high density RF environments. The excellent radiation characteristics are the distinguishing features of these well priced antennas. The antennas do have a small directional quality and this is high-lighted on the antenna radome. This is useful for preferential coverage areas.

Electrical Specification

Gain	13dBi
Frequency	2.5 - 2.7GHz
VSWR	1 : 1.8
Polarization	vertical
Power Rating	50W
Elevation Beamwidth	5 degrees
Cross Pol. Discrimination	26dB min
Impedance	50 ohms
Termination	Fixed N- female
Downtilt	2.5 degrees
Surge Protection	Built in

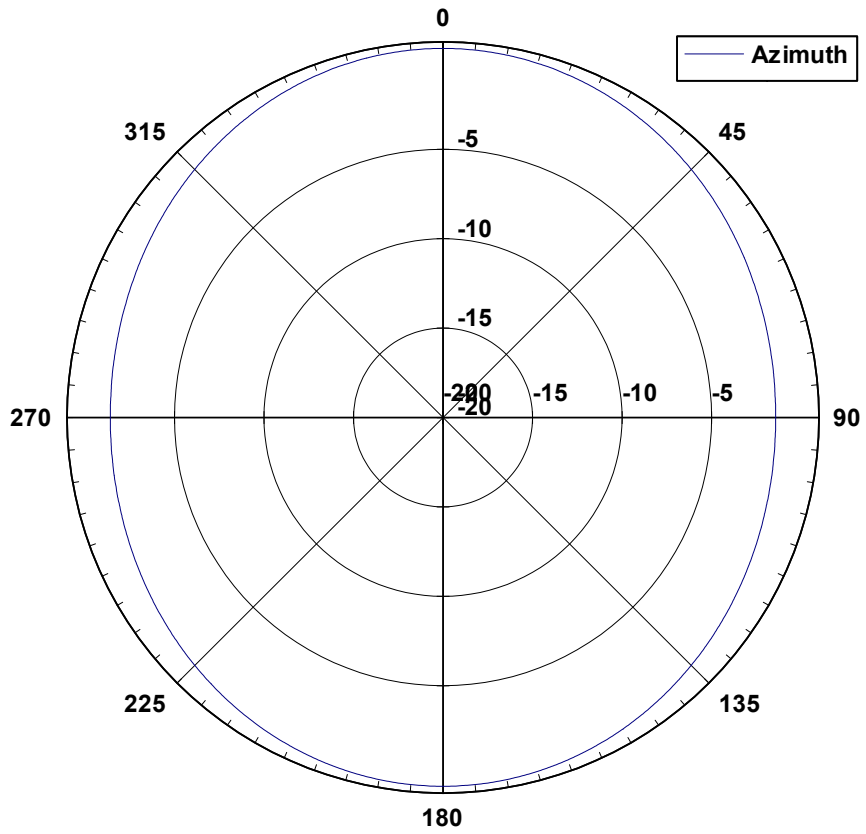
Mechanical Specifications

Length	165cm
Diameter	6.4cm
Weight	2.15kg incl. brackets
Windage(at 216km/h)	35kg
Mounting Pipe	5 cm pipe

Materials

Radiating Elements	Copper co-linear array
Radome	White Fibreglass
Clamps	HDG steel + Zinc plated Bolts

26 3360-2.5 Azimuth Pattern



26 3360-2.5 Elevation Pattern

