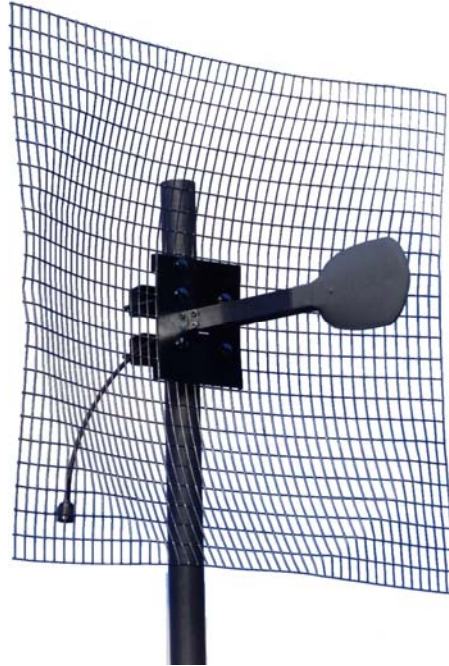




Stella Doradus Ireland Ltd.

GSM1800+UMTS Parabolic antenna Part No. 17-20 SD27



The 17- 20 SD27 is a high gain point to point antenna designed for use in high density RF environments. The excellent radiation characteristics are the distinguishing features of these well priced antennas. This family of grid antennas is designed for high wind harsh environments.

Electrical Specification

Gain	19.5dBi @ 1.7GHz 20.5dBi @ 2.17GHz
Bandwidth	1.7-2.17 GHz
3dB beam Pattern	10° x 10°
VSWR	1.8 : 1
Front to Back Ratio	28dB
Cross Polar Ratio	32dB
Polarization	Vertical / Horizontal
Power Rating	50W
Impedance	50 ohms
Termination	N-Male pigtail

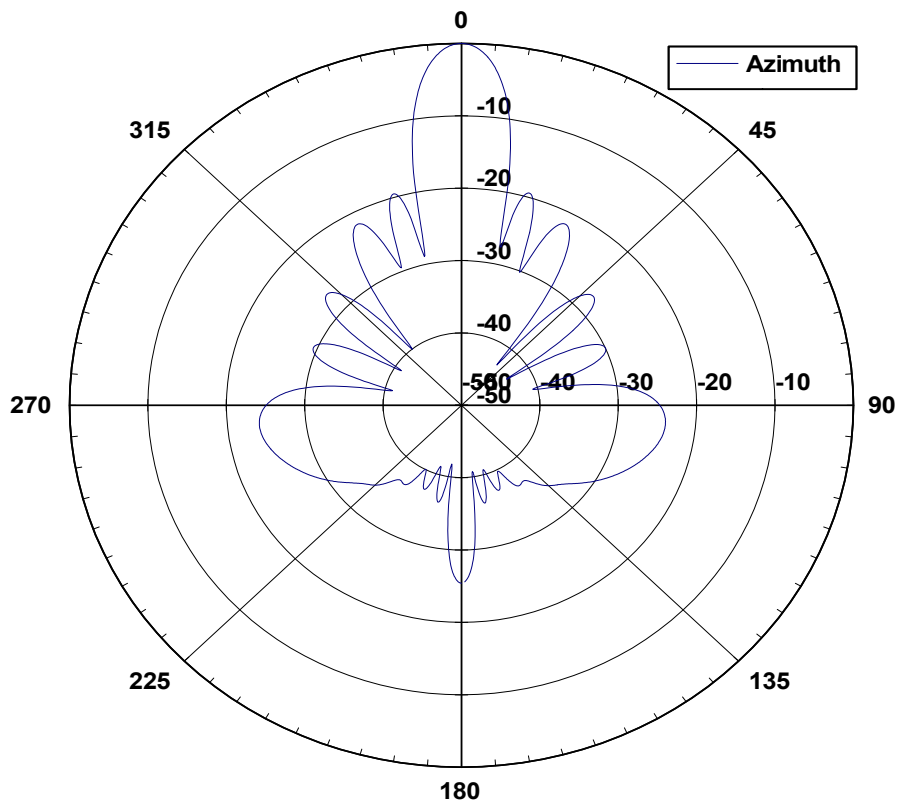
Mechanical Specifications

Length	91cm
Width	91cm
Weight (incl. brackets)	3.7kg
Windage(at 216kmph)	591 N
Mechanical Tilt	0-25 degrees
Mounting Pipe	5 cm pipe

Materials

Radiating Element	PCB Dipole
Radome (feed)	White UV stabilised polystyrene
Clamps	HDG steel + zinc plated steel bolts

17-20 SD27 Azimuth Pattern



17-20 SD27 Elevation Pattern

