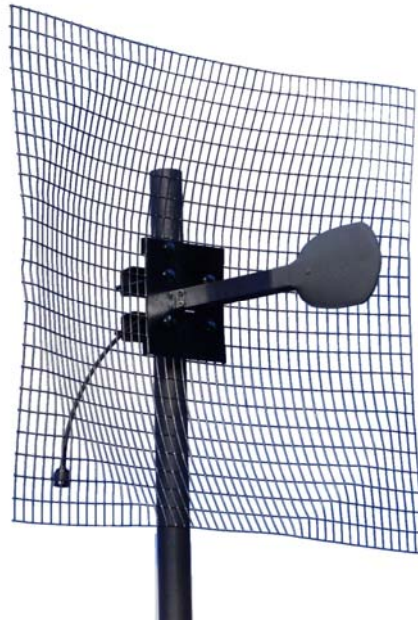




Stella Doradus Ireland Ltd.

5.6GHz Parabolic antenna

Part No.: 56 SD21



The 56SD21 is a high gain point to point antenna designed for use in high density RF environments. The excellent radiation characteristics are the distinguishing features of these well priced antennas. This family of grid antennas is designed for high wind harsh environments.

Electrical Specification

Gain	25dBi
Bandwidth	5.1-5.9GHz
VSWR	1.5 : 1
Beamwidth	6.4 degrees
Front to Back Ratio	31dBi
Polarization	Vertical / Horizontal
Power Rating	500W
Cross Pol. Discrimination	30dBi min after 100 degrees
Impedance	50 ohms
Termination	Fixed N- male

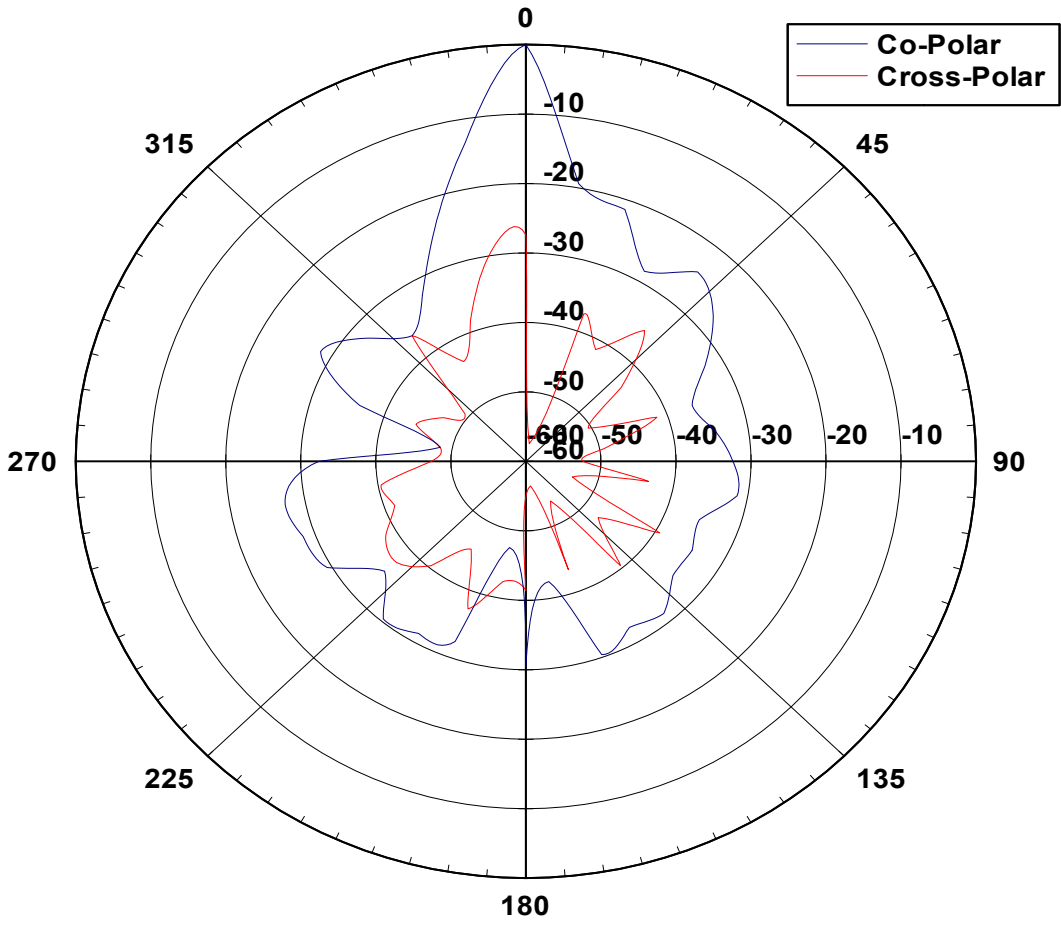
Mechanical Specifications

Length	61 cm
Width	61cm
Weight	2.4kg
Windage(at 216kmph)	376 N
Mechanical Tilt	0-25 degrees
Mounting Pipe	5 cm pipe

Materials

Radiating Element	PCB Dipole
Radome (feed)	UV stabilized Polystyrene
Clamps	HDG steel + zinc plated Bolts

56 SD21 Azimuth Pattern



56 SD21 Elevation Pattern

