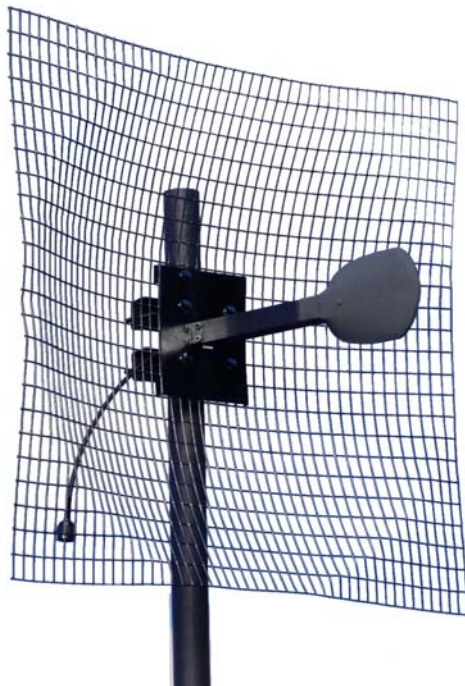




Stella Doradus Ireland Ltd.

4.4 - 5.2GHz Parabolic antenna

Part No.: 49 SD24



The 49 SD24 is a high gain point to point antenna designed for use in high density RF environments. The excellent radiation characteristics are the distinguishing features of these well priced antennas. This family of grid antennas is designed for high wind harsh environments.

Electrical Specification

Gain	27.4dBi
Bandwidth	4.4-5.2GHz
VSWR	1.8 : 1
Beamwidth	5.2 degrees
Front to Back Ratio	30dBi
Polarization	vertical / horizontal
Power Rating	100W
Cross Pol. Discrimination	40dBi min after 100 degrees
Impedance	50 ohms
Termination	Fixed N- male

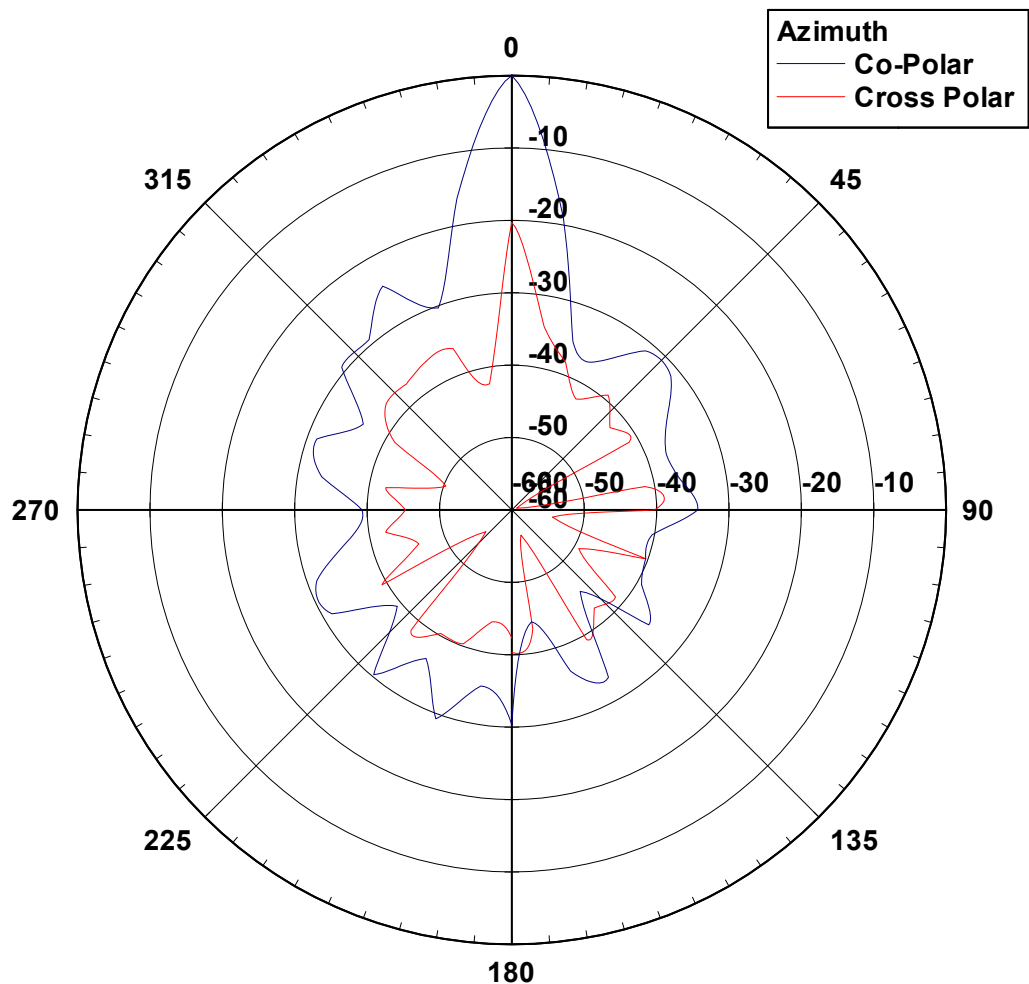
Mechanical Specifications

Length	76 cm
Width	76cm
Weight	3.2kg
Windage(at 216kmph)	476 N
Mechanical Tilt	0-25 degrees
Mounting Pipe	5 cm pipe

Materials

Radiating Element	PCB Dipole
Radome (feed)	ABS White
Clamps	HDG steel + zinc plated bolts

49 SD24 Azimuth Pattern



49 SD24 Elevation Pattern

