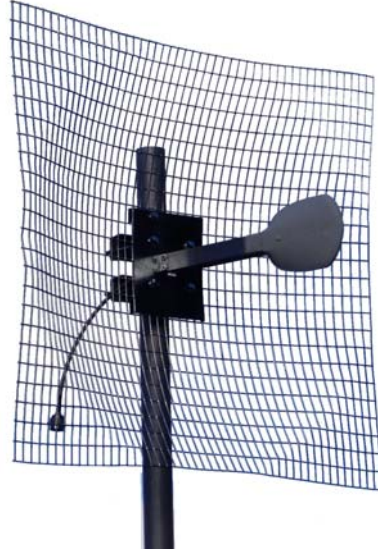




# Stella Doradus Ireland Ltd.

## 3.5GHz Parabolic antenna Part No.: 35 SD24



The 35 SD24 is a high gain point to point antenna designed for use in high density RF environments. The excellent radiation characteristics are the distinguishing features of these well priced antennas. This family of grid antennas is designed for high wind harsh environments.

### Electrical Specification

Gain	24.5 dBi
Bandwidth	3.2-3.8GHz
VSWR	1.5 : 1
Front to Back Ratio	28dB
Polarization	Vertical / Horizontal
Power Rating	50W
Impedance	50 ohms
Termination	N-male pigtail
Cross Pol. Discrimination	32dB min after 100 degrees

### Mechanical Specifications

Length	76 cm
Width	76cm
Weight	3.2kg
Windage(at 125mph)	476 N
Mechanical Tilt	0-25 degrees
Mounting Pipe	5 cm pipe

### Materials

Radiating Element	PCB Dipole
Radome ( feed )	Shock resistant ABS
Clamps	HDG steel + galvanised steel bolts

