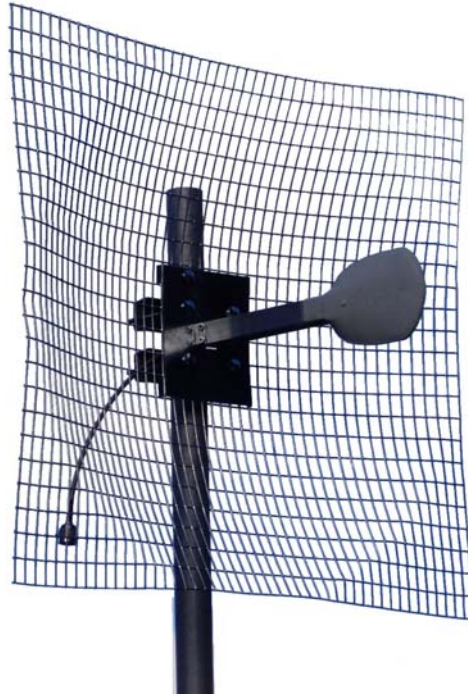




Stella Doradus Ireland Ltd.

1.9GHz Parabolic antenna Part No. 19 SD24



The 19 SD24 is a high gain point to point antenna designed for use in high density RF environments. The excellent radiation characteristics are the distinguishing features of these well priced antennas. This family of grid antennas is designed for high wind harsh environments.

Electrical Specification

Gain	20dBi
Bandwidth	1.7-1.9 GHz
3dB beam Pattern	12° x 12°
VSWR	1.4 : 1
Front to Back Ratio	28dB
Cross Polar Ratio	26dB
Polarization	Vertical / Horizontal
Power Rating	50W
Impedance	50 ohms
Termination	N-Male pigtail

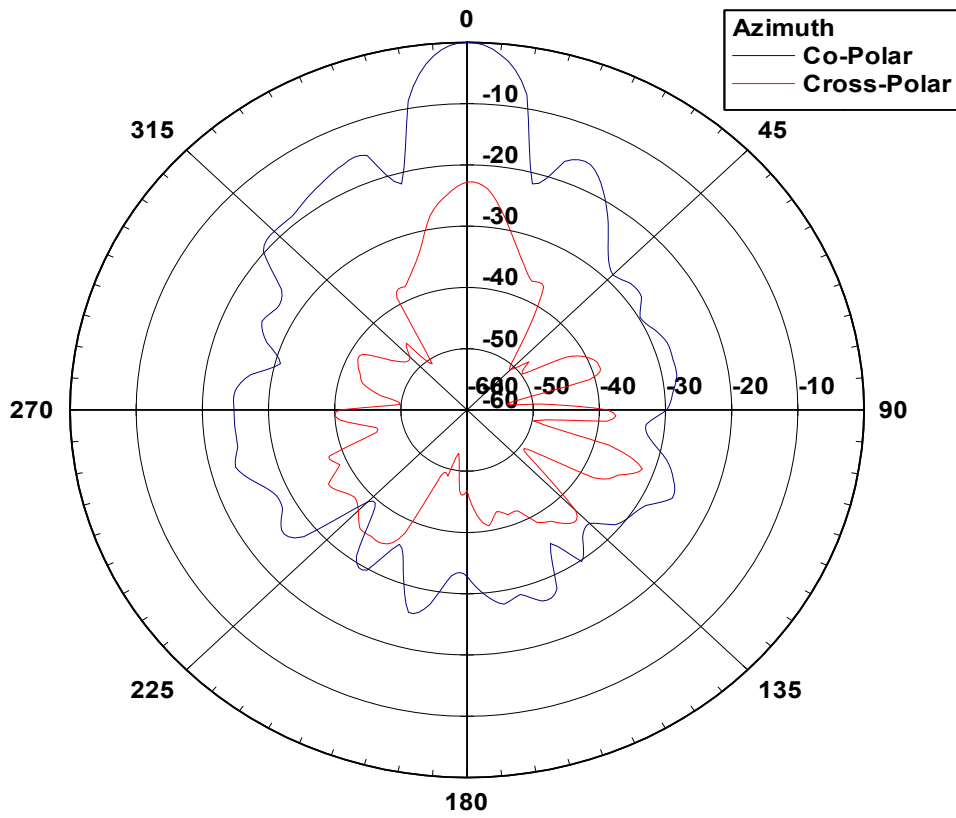
Mechanical Specifications

Length	76 cm
Width	76cm
Weight (incl. brackets)	2.7kg
Windage(at 216kmph)	476 N
Mechanical Tilt	0-25 degrees
Mounting Pipe	5 cm pipe

Materials

Radiating Element	PCB Dipole
Radome (feed)	Shock resistant ABS
Clamps	HDG steel + zinc plated steel bolts

19 SD24 Azimuth Pattern



19 SD24 Elevation Pattern

