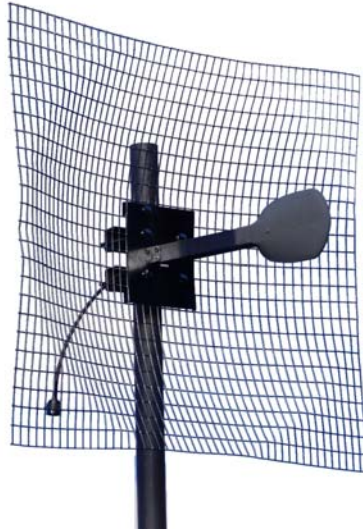




Stella Doradus Ireland Ltd.

1.4GHz Parabolic antenna

Part No.: 14 SD30



The 14 SD30 is a high gain point to point antenna designed for use in high density RF environments. The excellent radiation characteristics are the distinguishing features of these well priced antennas. This family of grid antennas is designed for high wind harsh environments.

Electrical Specification

Gain	20dBi
Bandwidth	1.35-1.45 GHz
3dB beam Pattern	8° x 8°
VSWR	1.8 : 1
Front to Back Ratio	35dB
Cross Polar Ratio	35dB
Polarization	Vertical / Horizontal
Power Rating	50W
Impedance	50 ohms
Termination	N-Male pigtail

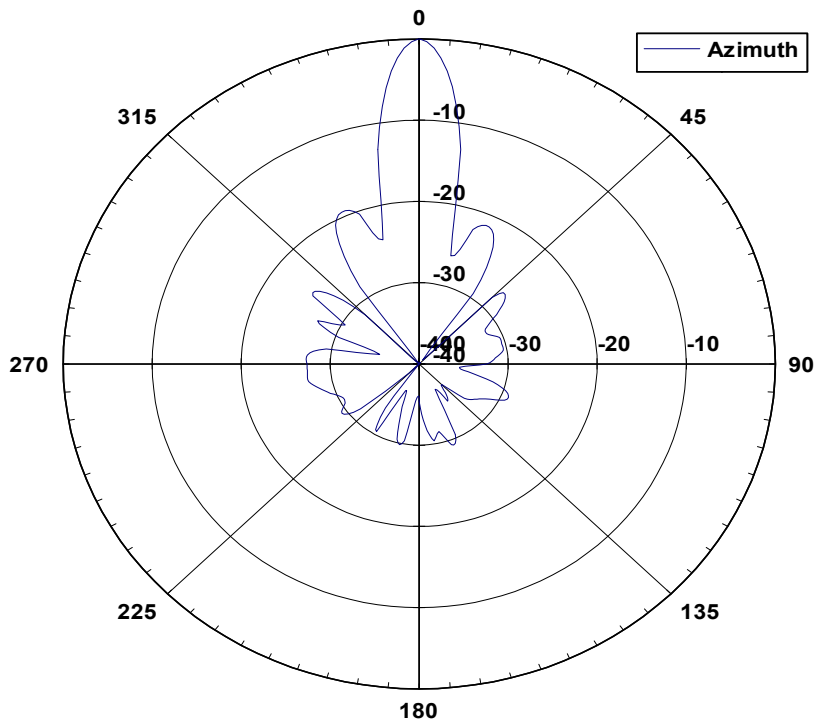
Mechanical Specifications

Length	122 cm
Width	122cm
Weight	13.2kg
Windage(at 216kmph)	1050 N
Mechanical Tilt	0-25 degrees
Mounting Pipe	10 cm pipe

Materials

Radiating Element	PCB Dipole
Radome (feed)	UV stabilized Polystyrene
Clamps	HDG steel + galvanised steel bolts

14 SD30 Azimuth Pattern



14 SD30 Elevation Pattern

