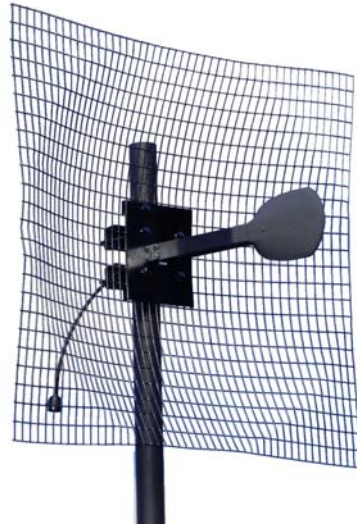




Stella Doradus Ireland Ltd.

1.4GHz Parabolic antenna Part No.: 14 SD24



The 14 SD24 is a high gain point to point antenna designed for use in high density RF environments. The excellent radiation characteristics are the distinguishing features of these well priced antennas. This family of grid antennas is designed for high wind harsh environments.

Electrical Specification

Gain	18dBi
Bandwidth	1.35-1.45 GHz
3dB beam Pattern	12° x 12°
VSWR	1.8 : 1
Front to Back Ratio	28dB
Cross Polar Ratio	26dB
Polarization	Vertical / Horizontal
Power Rating	50W
Impedance	50 ohms
Termination	N-Male pigtail

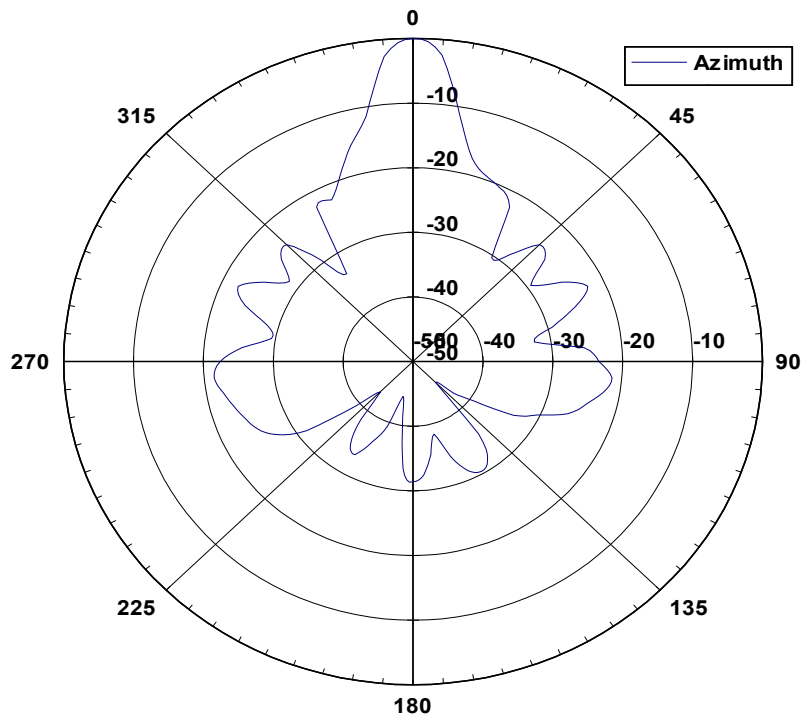
Mechanical Specifications

Length	76 cm
Width	76cm
Weight	2.7kg
Windage(at 216kmph)	476 N
Mechanical Tilt	0-25 degrees
Mounting Pipe	5 cm pipe

Materials

Radiating Element	PCB Dipole
Radome (feed)	UV stabilized Polystyrene
Clamps	HDG steel + galvanised steel bolts

14 SD24 Azimuth Pattern



14 SD24 Elevation Pattern

